

# ASSEMBLY KIT OF ENERGY CONTROL AND DISTRIBUTION

## Mod. DW/EV

### INTRODUCTION

This kit has been specifically designed for educational aims so that students can deal with the issues concerning the correct installation and laying of heating elements, of their accessories and of the pipes for the connection with hot water production source. This kit consists of two separate heating systems: a radiant system controlled by a proportional control thermostatic mixer and a coplanar manifolds heating system with 5 different lines: 3 lines feed 3 radiators provided with thermostatic valves, a line feeds the fourth radiator via a 4-way thermostatic valve for single-pipe systems, and a line feeds the fan coil.

The operation of thermostatic valve depends on room temperature.

### TRAINING PROGRAM:

Refer to the available diagrams in order to carry out the following operations:

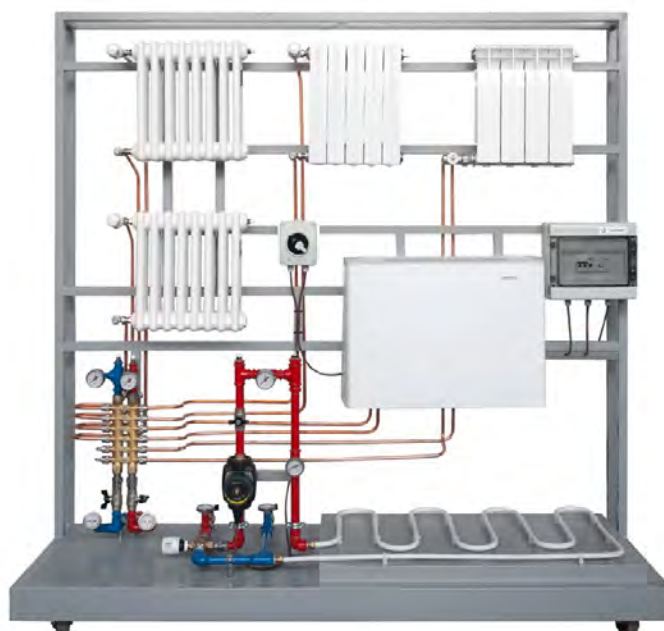
- assembly of the coplanar manifolds heating system
- assembly of the radiant heating system
- check of the heating elements correct installation
- filling the circuit with water and bleeding the air from the system

Analysis of the operation of:

- coplanar manifold
- proportional control: thermostatic mixer, thermostatic valve
- 4-way valve for single-pipe systems

### TECHNICAL SPECIFICATIONS:

- Steel structure mounted on wheels, painted and treated in the oven
- Heating system with manifolds including:
  - 6+6 coplanar manifolds
  - On-off valves, thermometers, pressure gauges, manual bleed valves
  - Steel (2) and of cast iron (1) radiators: each radiator is equipped with thermostatic valve, lockshield valve, manual bleed valve
  - Aluminium radiator with 4-way thermostatic valve for single-pipe systems
  - Fan coil
  - Connection pipes of copper



- Radiant heating system including:
  - Radiant panel
  - Three-speed circulation pump
  - Thermostatic mixer
  - On-off valves, manual bleed valve
  - Thermometers, pressure gauge
- Switchboard
- Emergency button
- Quick connections for connecting with the module of hot water production

**Dimensions:** 200 x 70 x 195 cm

**Net weight:** 180 kg

### REQUIRED

- **MOD. HW/EV - NOT INCLUDED**  
Assembly kit of hot water production
- OR (PROVIDED BY THE CUSTOMER)**
  - Hot water
  - Power supply: 230 Vac 50 Hz single-phase - 100 VA  
(Other voltage and frequency on request)

### SUPPLIED WITH

**THEORETICAL-EXPERIMENTAL HANDBOOK**

