

TWIN-ENGINE AIRCRAFT AIR CONDITIONING AND PRESSURIZATION SYSTEM

Mod. AQ-3/EV

INTRODUCTION

The aircraft air conditioning and pressurization simulator mod. AQ-3/EV, is included in a complete set of educational equipment for the basic training on aircraft systems.

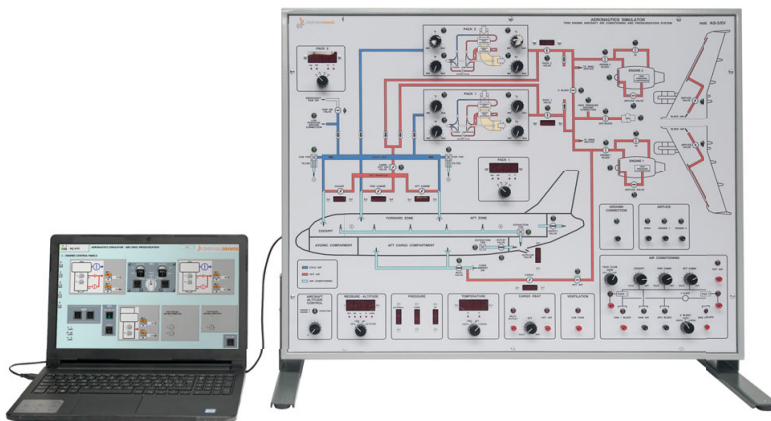
The simulator consists of a computer-assisted panel, with silk-screen mimic diagram for a clear location of its components.

Various zones of the mimic diagram are represented with different colours to emphasize peculiar aspects of the system.

Light and displays indicators, installed in the mimic diagram enable to assess the evolutions of the control.

The graphic display of the information available at the control input, such as aircraft status (park, APU ...) on the computer screen enables the permanent monitoring of the system.

The operational conditions are set by students according to the educational path indicated in the courseware, carried out by the PC.



TRAINING PROGRAM:

- **AIR INTAKE**
 - BLEED valve 1 and 2
 - FAN AIR VALVE 1 AND 2
 - APU BLEED valve
 - External group
 - Cross BLEED valve
- **AIR CONDITIONING CIRCUIT**
 - PACK 1 and 2
 - HEAT EXCHANGER 1 and 2
 - COMPRESSOR 1 and 2
 - AIR distribution
- **AIR PRESSURIZATION**
 - OUTFLOW valve
 - Pressurization profile
- **SYSTEM SUPERVISION SIMULATIONS**
- **STATUS**
 - Park
 - Airport service support
 - APU bleed
 - PACK 1 and 2
 - Engine starting
 - Pressurization cycle
- **AIR MANAGEMENT PROBLEMS HANDLING**

TECHNICAL SPECIFICATIONS:

The system is arranged on a silk-screen, panel provided with:

- Color silk screen panel
- Selection of the operational conditions with switches and pushbuttons
- Displays and LED visualisation
- Dynamic display of the parameters, on the computer screen, with high graphic performance software (LabVIEW)
- USB connexion with the computer

Power supply: 230 Vca 50 Hz single-phase - 50 VA
(Other voltage and frequency on request)

Dimensions: 835 x 455 x 650 mm

Weight: 19 kg

REQUIRED

PERSONAL COMPUTER
- NOT INCLUDED -



SUPPLIED WITH

SOFTWARE:
SIMULATOR CONTROL MANAGEMENT WITH
GRAPHICAL DISPLAY ON THE PC SCREEN



**THEORETICAL-EXPERIMENTAL
HANDBOOK**

